

SNOW:
 $I_s = 1.25$
 $S_s = 2.6 \text{ kPa}$
 $S_r = 0.3 \text{ kPa}$

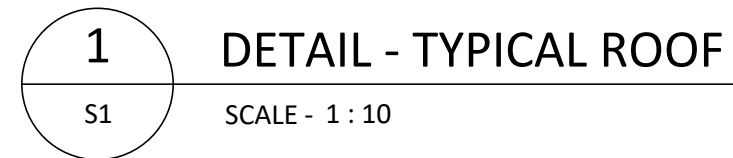
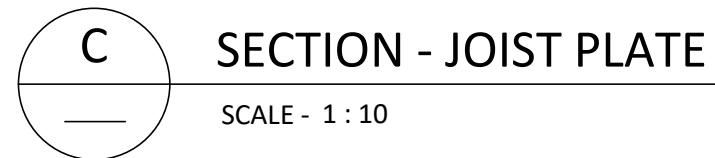
FOR CONSTRUCTION

REFERENCE DRAWINGS		REVISIONS						



DELEGATED BY: A. PEDERSON		EVENT: MUNICIPALITY OF RED LAKE							
DRAWN BY: A. PICTON		PROJECT LOCATION: SEWAGE TREATMENT PLANT / BALMERTOWN, ON							
CHECKED BY: D. GEROW		TITLE: GENERAL GENERAL ARRANGMENT WASTE POLUTION CONTROL PLANT ROOF PLAN & ISOMETRIC							
APPROVED BY: D. GEROW									
DATE	11 JUN 25	SCALE	AS NOTED	PROJ NO	24251	DWG NO	24251-S1	REV NO	0

1. FOR STRUCTURAL STEEL NOTES SEE DRAWING S1



REFERENCE DRAWINGS		REVISIONS					
REF DWG No.	REFERENCE DRAWING TITLE	REV	DESCRIPTION			DATE	BY CHECK APPR.



DESIGNED BY: A. PEDERSON	CLIENT: MUNICIPALITY OF RED LAKE			
DRAWN BY: A. PICTON	PROJECT LOCATION: SEWAGE TREATMENT PLANT / BALMERTOWN, ON			
CHECKED BY: D. GEROW	TITLE: GENERAL GENERAL ARRANGMENT WASTE POLLUTION CONTROL PLANT ROOF SECTIONS & DETAILS			
APPROVED BY: D. GEROW				
DATE 11 JUN 25	SCALE: AS NOTED	PROJECT NO. 24251	DRAWING NO. 24251-S2	REV. NO. 0

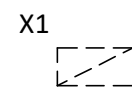
LEGEND - LIGHTING



4" SEALED INDUSTRIAL LINEAR VAPOURTIGHT FIXTURE. 46W, 5100 LUMEN, 4000K, 80 CRI, 120-277V
UNIVERSAL VOLTAGE. RATED FOR -35C TO 40C. WET LOCATION LISTED. CONFIRM EXISTING LIGHTING
CIRCUIT VOLTAGE PRIOR TO ORDERING.
DAY-BRITE # DWPES1LH840-4-UNV



EXISTING WEATHERPROOF TOGGLE SWITCH TO BE MAINTAINED AND REUSED TO CONTROL NEW AREA LIGHTING.



EXISTING COLUMN MOUNTED WALL-PACK TYPE LIGHT FIXTURE TO BE DEMOLISHED. REMOVE MOUNTING FIXTURE, MOUNTING HARDWARE, WIRING AND REDUNDANT CONDUIT BACK TO SOURCE. RETAIN EXISTING LIGHTING CIRCUIT FOR USE WITH NEW AREA LIGHTING.

ELECTRICAL SPECIFICATIONS

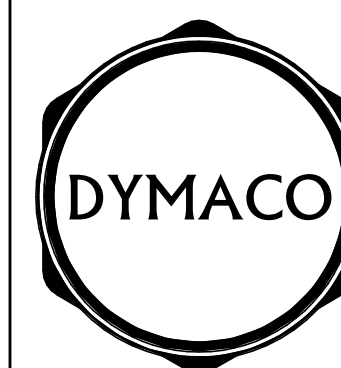
1. CONTRACTOR TO PROVIDE A COMPLETE AND COORDINATED INSTALLATION AS SHOWN ON THE DRAWINGS, SPECIFICATIONS AND AS REASONABLY IMPLIED. PROVIDE ALL NECESSARY LABOUR, MATERIALS AND EQUIPMENT.
2. INSTALLATION SHALL COMPLY WITH THE LATEST EDITIONS OF THE ONTARIO BUILDING CODE, ONTARIO ELECTRICAL SAFETY CODE, ONTARIO FIRE CODE AND ALL OTHER APPLICABLE CODES AND REGULATIONS.
3. DO NOT SCALE DRAWINGS. CONTRACTOR SHALL VERIFY ALL DIMENSIONS.
4. CONTRACTOR TO APPLY AND PAY FOR AN ELECTRICAL PERMIT. PROVIDE CERTIFICATE OF ACCEPTANCE FROM ELECTRICAL SAFETY AUTHORITY AT COMPLETION OF WORK.
5. PROVIDE COMPLETE FUNCTIONAL TESTING FOR ALL SYSTEMS INSTALLED TO CONFIRM PROPER OPERATION. PROVIDE ADJUSTMENTS AND/OR CALIBRATIONS AS NECESSARY.
6. ALL EQUIPMENT SHALL BE NEW AND APPROPRIATE FOR USE IN CANADA. EQUIPMENT SHALL BE CERTIFIED BY AND CARRY THE MARKING OF A RECOGNIZED EVALUATION AGENCY, ACCEPTABLE TO THE ELECTRICAL SAFETY AUTHORITY, SUCH AS CSA, UL OR EQUIVALENT.
7. PERFORM INSTALLATION IN A NEAT AND WORKMANLIKE MANNER. INSTALL EQUIPMENT LEVEL AND GROUPED APPROPRIATELY. INSTALL DEVICES, CABLING AND SERVICES PARALLEL AND/OR PERPENDICULAR TO BUILDING LINES. PROVIDE A CLEAN AND FINISHED APPEARANCE.
8. ALL WIRING SHALL BE COPPER UNLESS SPECIFIED OTHERWISE. MINIMUM WIRE SIZE SHALL BE #12 AWG.
9. ALL WIRING SHALL BE ROUTED ON SURFACE. UTILIZE TECK90 OR RW90 WITHIN RIGID PVC CONDUIT C/W WEATHERPROOF FITTINGS AND BOXES. STRAPPING USED TO SUPPORT CONDUITS AND/OR CABLES SHALL BE ALUMINUM OR STAINLESS STEEL.
10. MOUNTING HEIGHTS FOR DEVICES AS PER CODE REQUIREMENTS, UNLESS INDICATED OTHERWISE.
11. COORDINATE INSTALLATION AND ROUGH-IN WORK WITH OTHER CONSTRUCTION TRADES TO MINIMIZE CONFLICTS AND INTERFERENCES.
12. PROVIDE COMPREHENSIVE DEMOLITION FOR THE AREAS UNDER CONSTRUCTION, INCLUDING THE REMOVAL OF REDUNDANT EQUIPMENT, DEVICES, WIRING, CONDUIT AND BOXES. REMOVE ELECTRICAL EQUIPMENT FROM STRUCTURES/WALLS/CEILINGS BEING DEMOLISHED. REMOVE AND REROUTE WIRING WHERE NECESSARY. COORDINATE DEMOLITION WORK WITH OTHER TRADES AND REVIEW DEMOLITION NOTES/SCOPES OF WORK ON STRUCTURAL DRAWING SET.

PROJECT NOTES

1. REMOVE EXISTING LIGHTING IN IT'S ENTIRETY.
2. REMOVE ALL CONDUIT, WIRING, BOXES AND MISCELLANEOUS ELECTRICAL EQUIPMENT MADE REDUNDANT DUE TO REMOVAL OF EXISTING LIGHTING.
3. MAINTAIN EXISTING WEATHERPROOF LIGHT SWITCH AND REUSE TO CONTROL NEW LIGHTING.
4. MAINTAIN EXISTING LIGHTING CIRCUIT AND REUSE TO FEED NEW LIGHTING.
5. SUPPLY AND INSTALL NEW LIGHTING WHERE INDICATED ON PLANS. TIE INTO EXISTING AREA LIGHTING CIRCUIT AND SWITCHING. MOUNT LIGHT FIXTURES TO NEW CEILING, CENTERED OVER WALKWAYS WHILE AVOIDING CEILING STRUCTURAL ELEMENTS.

ELECTRICAL LIGHTING PLAN

SCALE- 1 : 35

[illegible]

DESIGNED BY: C. GIGUERE	CLIENT: MUNICIPALITY OF RED LAKE			
DRAWN BY: C. GIGUERE	PROJECT LOCATION: SEWAGE TREATMENT PLANT BALMERTOWN, ON			
CHECKED BY: M. NOONAN	TITLE: LIGHTING PLAN			
APPROVED BY: M. NOONAN				
DATE: 26 JUN 25	SCALE: AS NOTED	PANEL NO: 24251	DWG. NO: 24251-F1	REV. NO: 0